



GREEN
INTERNATIONAL
UNIVERSITY



ANNUAL SUSTAINABILITY REPORT 2025

*Advancing Sustainability, Innovation
& Institutional Excellence*



ENVIRONMENT



EDUCATION



INNOVATION



GOVERNANCE



RESILIENCE



PARTNERSHIPS

Green International University (GIU)

Lahore, Pakistan



Contents

Pillar I: Green Campus — Environment & Infrastructure.....	2
Sustainable Campus Infrastructure (Goal 1):.....	2
Energy Efficiency & Climate Action (Goal 2):.....	3
Renewable Energy Feasibility Study.....	3
Water Conservation (Goal 3):.....	3
Waste Reduction & Circular Economy (Goal 4):.....	3
Sustainable Transportation (Goal 5):.....	4
Pillar II: Sustainable Development Goals — Research, Teaching & Outreach.....	5
SDG-Oriented Research (Goal 6):.....	5
Curriculum Integration (Goal 7):.....	5
Institutional Stewardship (Goal 8):.....	6
Pillar III: Innovation, Entrepreneurship & Real-World Impact.....	6
University Business Incubation Centre (UIEC) (Goal 10):.....	6
Industry Partnership and Technology Application (Goal 11):.....	7
Pillar IV: Ethics, Governance & Institutional Integrity.....	7
Anti-Corruption & Whistleblowing Systems (Goal 13):.....	7
ESG Governance Framework (Goal 14):.....	7
Pillar V: Resilience, Crisis Readiness & Institutional Sustainability.....	8
Crisis Management & Cybersecurity (Goal 15):.....	8
Financial Sustainability & Grants (Goal 16):.....	8
Compliance Register & Timeline Outlook.....	8
2025 Compliance Summary.....	9
Looking Ahead: Phase 2 Priorities (2026–2027).....	9
Financial Summary & Sustainable Procurement.....	9

Annual Sustainability Report 2025

Pillar I: Green Campus, Environment & Infrastructure

Sustainable Campus Infrastructure (Goal 1):

During 2025, GIU continued its efforts to develop a sustainable and inclusive campus environment. Green spaces were maintained and enhanced, while accessibility audits were conducted to identify areas for improvement. The University also explored opportunities for integrating smart campus technologies to support efficient operations and sustainability objectives. Green International University (GIU) is committed to developing and maintaining a sustainable, inclusive, and environmentally responsible campus. The University promotes energy-efficient buildings, renewable energy solutions, green spaces, biodiversity conservation, sustainable water and waste management practices, and accessible infrastructure to enhance environmental quality and resource efficiency.

GIU further supports sustainable mobility, digital learning, research facilities, and community engagement initiatives that contribute to environmental sustainability, social inclusion, and institutional development. Through these efforts, the University aims to create a resilient and sustainable campus environment aligned with the Sustainable Development Goals (SDGs) and global sustainability best practices.

These initiatives support SDGs 1, 3, 4, 5, 6, 7, 8, 9, 10, 11, 12, 13, 14, 15, and 17, reflecting GIU's commitment to sustainable and inclusive institutional development



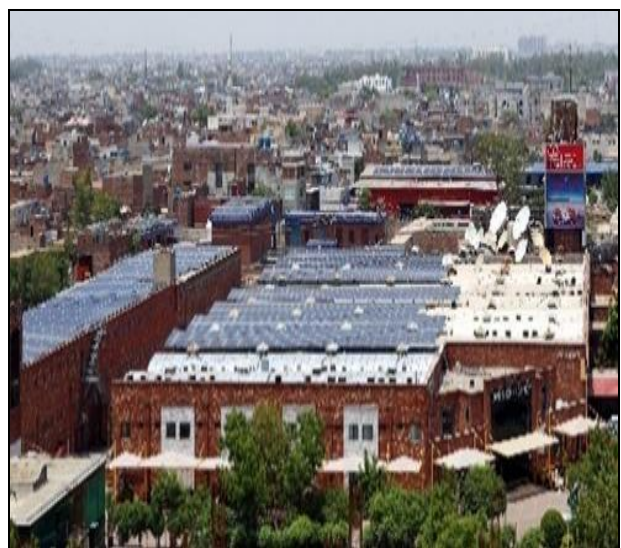
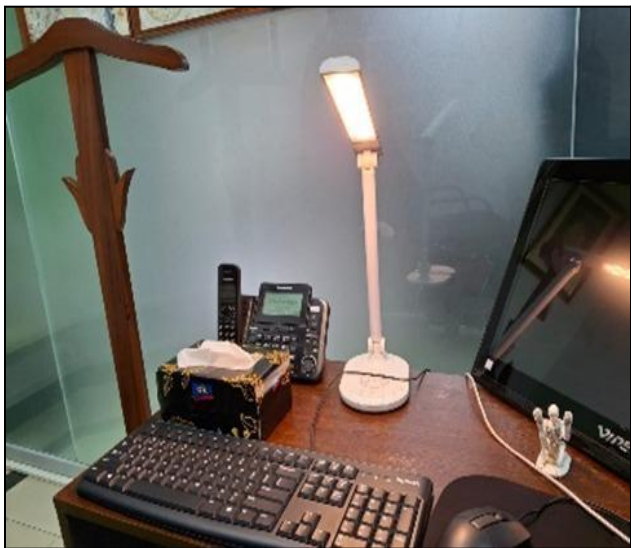
Energy Efficiency & Climate Action (Goal 2):

Renewable Energy Feasibility Study.

The University promoted energy efficiency through the use of energy-efficient appliances, LED lighting systems, and sustainable energy management practices across campus facilities. Awareness initiatives were conducted to encourage responsible energy consumption among students and staff. In addition, preliminary feasibility assessments were undertaken to explore the adoption of renewable energy solutions and support the University's long-term climate action and sustainability objectives.

Green International University (GIU) promotes energy efficiency and climate action through the adoption of energy-efficient technologies, renewable energy solutions, and sustainable energy management practices. The University has implemented LED lighting, energy-efficient equipment, solar energy, and waste-to-energy initiatives to reduce energy consumption, lower carbon emissions, and support a low-carbon campus environment.

These efforts contribute to environmental sustainability, resource efficiency, climate resilience, and the achievement of SDGs 3, 4, 7, 9, 11, 12, 13, and 17.



Water Conservation (Goal 3):

Green International University (GIU) promotes water conservation through efficient water management practices, regular maintenance of water infrastructure, and awareness initiatives that encourage responsible water consumption across the campus.

These efforts support sustainable resource management, environmental protection, and the achievement of SDGs 6, 12, and 13.

Waste Reduction & Circular Economy (Goal 4):

Green International University (GIU) promotes waste reduction and circular economy practices through waste segregation, recycling initiatives, responsible resource utilization, and awareness campaigns across the campus. The University encourages the reuse of materials and

environmentally responsible waste management practices to minimize environmental impact and support sustainable consumption.

These initiatives contribute to resource efficiency, environmental sustainability, and the achievement of SDGs 11, 12, and 13.



Sustainable Transportation (Goal 5):

GIU promotes sustainable transportation through low-emission mobility practices, shared transport arrangements, pedestrian-friendly infrastructure, and initiatives that encourage environmentally responsible commuting across the campus.

GIU promotes sustainable transportation through a pedestrian-friendly campus design, shared mobility practices, and responsible transport management. The University's compact layout encourages walking between academic and administrative facilities, reducing dependence on motorized transportation and supporting a healthier campus environment.

GIU further promotes sustainable mobility through limited parking facilities, carpooling initiatives, and the use of public transportation, helping to reduce traffic congestion, energy consumption, and greenhouse gas emissions. These efforts contribute to a safer, more accessible, and environmentally responsible campus.

These initiatives support SDGs 3, 4, 11, 12, 13, and 17 by promoting sustainable mobility, environmental protection, and community well-being.

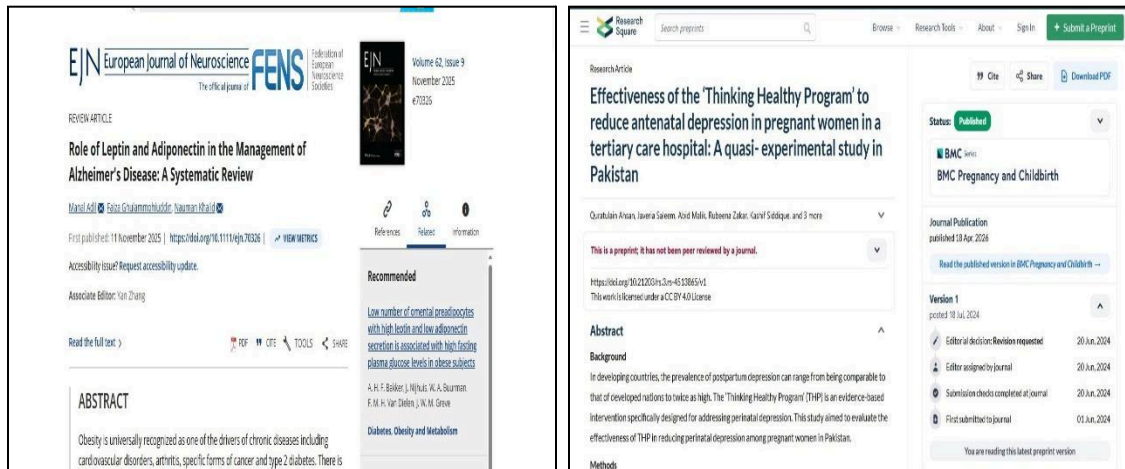


Pillar II: Sustainable Development Goals, Research, Teaching & Outreach

SDG-Oriented Research (Goal 6):

Green International University promotes SDG-oriented research through interdisciplinary research initiatives that address environmental, social, and economic sustainability challenges. The University encourages faculty and students to engage in research that contributes to innovation, knowledge creation, and sustainable development.

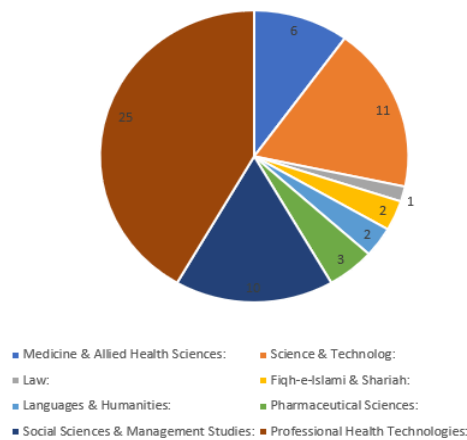
These efforts support SDGs 4, 9, 11, 13, and 17 by advancing research, innovation, and collaborative solutions for sustainable development



Curriculum Integration (Goal 7):

Green International University (GIU) integrates sustainability, global citizenship, and responsible leadership principles into its academic programs to enhance students' knowledge, skills, and awareness of contemporary global challenges. The University also promotes digital learning and innovative teaching practices to strengthen sustainability-focused education across disciplines.

These initiatives support SDGs 4, 8, 12, and 13 by promoting quality education, responsible citizenship, and sustainable development awareness.



Institutional Stewardship (Goal 8):

Green International University (GIU) promotes institutional stewardship by ensuring fair, transparent, and responsible management practices across all areas of the University. The University is committed to fostering an inclusive and supportive environment through gender equity, employee welfare, data protection, and ethical governance practices that protect the rights and well-being of students, faculty, and staff.

GIU continuously works to strengthen transparency, accountability, and institutional integrity while promoting equal opportunities, workplace well-being, and responsible decision-making. These efforts help create a secure, equitable, and sustainable learning and working environment for all stakeholders.

These initiatives contribute to SDGs 5, 10, 16, and 17 by promoting inclusion, good governance, institutional accountability, and sustainable development.



Pillar III: Innovation, Entrepreneurship & Real-World Impact

University Business Incubation Centre (UIEC) (Goal 10):

Green International University (GIU) promotes innovation and entrepreneurship through its University Business Incubation Centre (UIEC), which supports student and faculty start-ups through incubation, mentoring, capacity-building activities, and access to entrepreneurial

resources. The Centre encourages innovative solutions, business development, and knowledge transfer to create real-world impact.

These initiatives contribute to SDGs 4, 8, 9, and 17 by fostering innovation, entrepreneurship, and sustainable economic growth.



Industry Partnership and Technology Application (Goal 11):

GIU strengthens collaboration with industry through strategic partnerships that support research, internships, curriculum development, and applied learning opportunities. The University also promotes the adoption of Fourth Industrial Revolution (4IR) technologies, including digital systems and emerging technologies, to enhance academic, research, and operational efficiency.

These efforts contribute to SDGs 4, 8, 9, 11, and 17 by advancing innovation, industry engagement, and technology-driven development



Pillar IV: Ethics, Governance & Institutional Integrity

Anti-Corruption & Whistleblowing Systems (Goal 13):

Green International University (GIU) is committed to promoting transparency, accountability, and ethical conduct through the implementation of anti-corruption and institutional integrity measures. The University maintains mechanisms for reporting misconduct, unethical behaviour, and policy violations through confidential complaint and whistleblowing channels that protect the interests of students, faculty, staff, and other stakeholders.

These initiatives strengthen institutional integrity, ethical governance, and stakeholder trust while contributing to SDG 16 (Peace, Justice and Strong Institutions).

ESG Governance Framework (Goal 14):

GIU promotes responsible governance by integrating Environmental, Social, and Governance (ESG) principles into institutional planning, decision-making, and performance monitoring. The Board of Governors and relevant committees provide oversight of sustainability initiatives and support the development of transparent reporting practices aligned with national and international sustainability standards.

These efforts contribute to SDGs 12, 16, and 17 by strengthening accountability, sustainable governance, and institutional partnerships.



Pillar V: Resilience, Crisis Readiness & Institutional Sustainability

Crisis Management & Cybersecurity (Goal 15):

GIU is committed to enhancing institutional resilience through effective crisis management, risk mitigation, and cybersecurity practices. The University supports the development of emergency preparedness, business continuity, and information security measures to ensure the protection of people, infrastructure, data, and essential operations during unforeseen events.

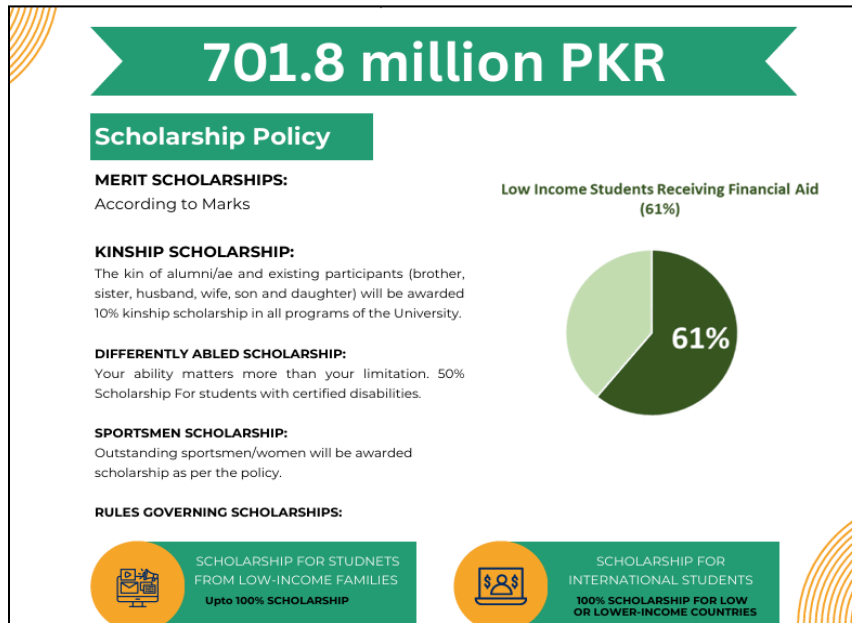
These initiatives contribute to SDGs 9, 11, and 16 by promoting resilient infrastructure, safe communities, and strong institutions.



Financial Sustainability & Grants (Goal 16):

GIU promotes long-term institutional sustainability through diversified funding opportunities, research grants, and strategic resource management. The University encourages the acquisition of national and international grants, particularly those focused on sustainability, innovation, and community development, to strengthen research capacity and support sustainable institutional growth.

These efforts contribute to SDGs 4, 9, 17, and other sustainability-related goals through enhanced research, innovation, and collaborative development.



Compliance Register & Timeline Outlook

2025 Compliance Summary

GIU, through the Internal Quality Assurance and Enhancement (IQAE) Department, maintains a formal Compliance Register to monitor the implementation of sustainability goals, policies, and reporting requirements across all departments. The compliance monitoring process supports institutional accountability and continuous improvement.

Where instances of non-compliance or delays in data submission are identified, formal notifications are issued to the respective departments, requiring the submission of corrective action plans within the prescribed timeline. Follow-up reviews are conducted to ensure timely implementation of corrective measures and compliance with institutional requirements.

These efforts strengthen transparency, accountability, and effective governance while supporting the University's commitment to continuous institutional improvement.

Looking Ahead: Phase 2 Priorities (2026–2027)

As the University advances into Phase 2 of implementation, the following priority initiatives will be actively pursued:

- Launch the Green Building Policy for all new construction and infrastructure projects.
- Initiate the installation of renewable energy systems to support the University's clean energy transition.
- Expand industry engagement and achieve the target of 20 active industry-academia partnerships.
- Publish the University's first comprehensive ESG/GRI Disclosure Report in alignment with international sustainability reporting standards.

Financial Summary & Sustainable Procurement

To comply with Section 4 (Finance Department responsibilities), include a high-level summary of:

- 1) Allocate financial resources to support sustainability initiatives, environmental projects, research activities, and green campus development.
- 2) Establish and strengthen the Green University Fund to finance sustainability-related infrastructure, innovation, and institutional improvement projects.
- 3) Promote sustainable procurement practices by prioritizing environmentally and socially responsible suppliers, products, and services.
- 4) Integrate sustainability considerations into budgeting, purchasing, and resource allocation processes to support long-term institutional sustainability.